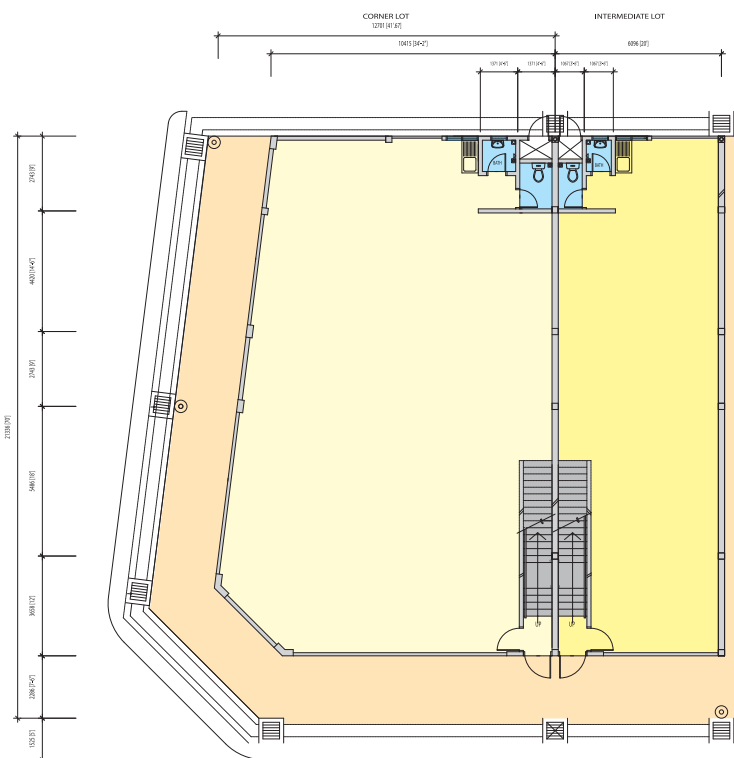
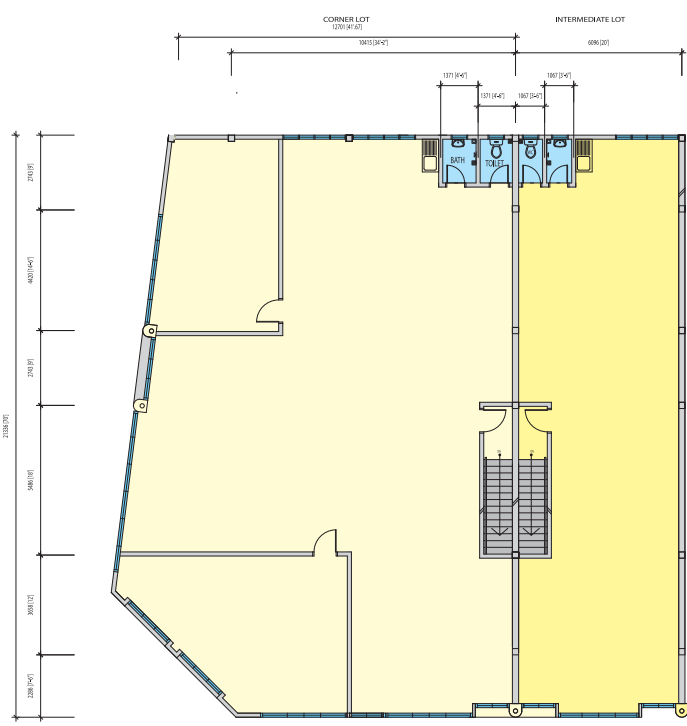


Floor Plan/平面圖



GROUND FLOOR PLAN



FIRST FLOOR PLAN

Specifications/材料規格

- Structure 結構 - Reinforced Concrete Framework 鋼筋混凝土
- Wall 牆 - Clay Brick / Cement Sand Brick 泥磚/沙灰磚
- Roofing (Top Most Floor) 屋瓦 (頂樓) - Colorbond Metal Decking 波狀顏色鋅板屋頂
- Roof Timber (Top Most Floor) 屋梁 (頂樓) - Timber Trusses 木條构架
- Floor Finish 地面修飾 - Cement Render 洋灰刷面
- Varendah / Toilet 走廊/廁所 - Ceramic Tiles 陶瓷磚
- Wall Finish 牆壁修飾 - Plaster & Paint 抹灰磚牆及油漆
- Bath / Toilet : 浴室/廚房 - 1.5m High Colour Glazed tiles 1.5m 公尺高顏色磁磚

- Ceiling 天花板 - Plaster & Paint 抹灰及油漆
- Ground Floor 底樓 - Suspended Gypsum Board 一種
- 1st Floor 一樓 - Asbestos Free Ceiling Board 免石棉洋灰板

- Sanitary Installations 衛生配備
- Sitting W.C. 坐式廁器 - 2 nos 個
- Urinal Bowl 站式廁器 - 2 nos 個
- Wash Hand Basin 洗手盆 - 2 nos 個
- Single Bowl Alum. Sink 鋁質洗碗盆 - 2 nos 個
- Tap 水龍頭 - 6 nos 個

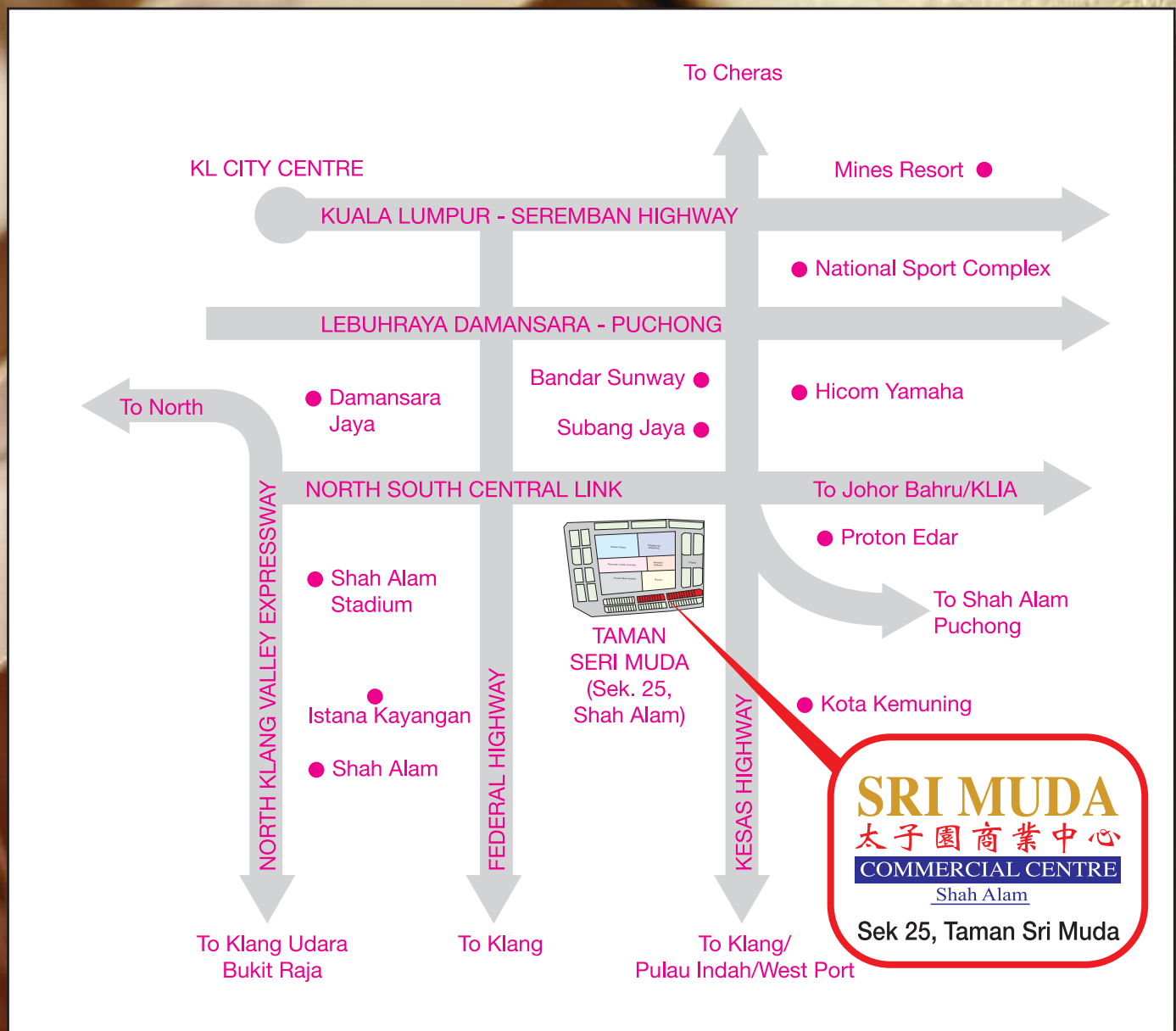
- Door 門
- Ground Floor Front, Rear 底樓 (前) - Metal Roller Shutter 鐵簾卷門
- Ground Floor Side Staircase 底樓樓梯 - 1 Hour Fire Rating Door 一小時防火門
- Others 其他 - Plywood Flushed Door 平面夾板門

- Window 窗
- Front (前門) - Top Hung Windows / Aluminium Casement 鋁質推上/滑動窗
- Others (其他) - Adjustable / Fixed Glass Louvred Windows 可調整/固定玻璃百葉窗

Electrical Installation	Intermediate / End Lot	End Lot (Odd)	Corner Lot
電流設備	中間/邊間	邊間 (特殊)	角頭間
Lighting Point 電燈位	- 21 nos 個	- 23 nos 個	- 35 nos 個
Fan Point 電風位	- 2 nos 個	- 3 nos 個	- 4 nos 個
13A Power Point	- 14 nos 個	- 14 nos 個	- 17 nos 個
13安培電插頭位			



Location Map/位置圖



Developer / 發展商:

旺達(蕉賴)發展有限公司
WIRA CHERAS DEVELOPMENT SDN. BHD.
 (A Subsidiary of SYF Resources Bhd) (364375-H)
 No. 5, Jalan Indah 2/7, Taman Indah, 43200 Batu 11 Cheras, Selangor Darul Ehsan.
 Tel: 03-9075 5333 (Hunting Line) Fax: 03-9076 5533
 (557483-U)

You are invited to our Sales Office at:
 歡迎光臨我們的銷售辦事處:

No. 5, Jalan Indah 2/7, Taman Indah, 43200 Batu 11 Cheras, Selangor Darul Ehsan.
 Tel: 03-9075 5333 (Hunting Line) Fax: 03-9076 5533

每日營業 Open Daily **8.30am - 5.30pm**

End Financiers:

DISCLAIMER CLAUSE: All art renderings and photographs contained in this circular are artist's impressions only. The developer reserve the right to modify any parts of the building prior to completion as directed or approved by the relevant authorities. All plans, layouts, informations are subject to change and cannot form of an offer or contract or presentation.

FREEHOLD
 永久地契
 價錢由 **RM638,000.00** 起 onwards

SRI MUDA
 太子園商業中心
COMMERCIAL CENTRE
 Shah Alam

FLOURISHING PROSPERITY

昌旺



A Prosperous Piece Of Gold Land

旺盛金地

A prestigious commercial project by **WIRA CHERAS DEVELOPMENT SDN BHD**
 (A Subsidiary of SYF Resources Bhd) (364375-H)

旺達(蕉賴)發展有限公司的一項具有威信的商業發展計劃

SRI MUDA TOWN CENTRE Shah Alam, is an early-bird development. It is now a very prosperous landmark and full fledged. SRI MUDA is populous with bustling human flow and flourishing business activities and is a town with full amenities. It is the transportation hub with easy access to all the majors towns and cities within the Klang Valley.

太子園是莎亞南最早期發展的一個市鎮，現在它已成為一個繁榮無比，生氣勃勃，應有盡有，設備完善的大市鎮。它人口密聚，人潮涌湧，生意目不暇顧，是設備齊全的城市，交通中樞，四通八達，可輕易到達巴生谷各主要城市。

優勢地點 Superior Location

盈利豐收 Big Rewards and highly profitable

交通發達 Easy Accesibility

成功市場 Well-established Markets



A truly life reviving and flourishing commercial centre.
一個名副其實的風生水起興旺商業中心。

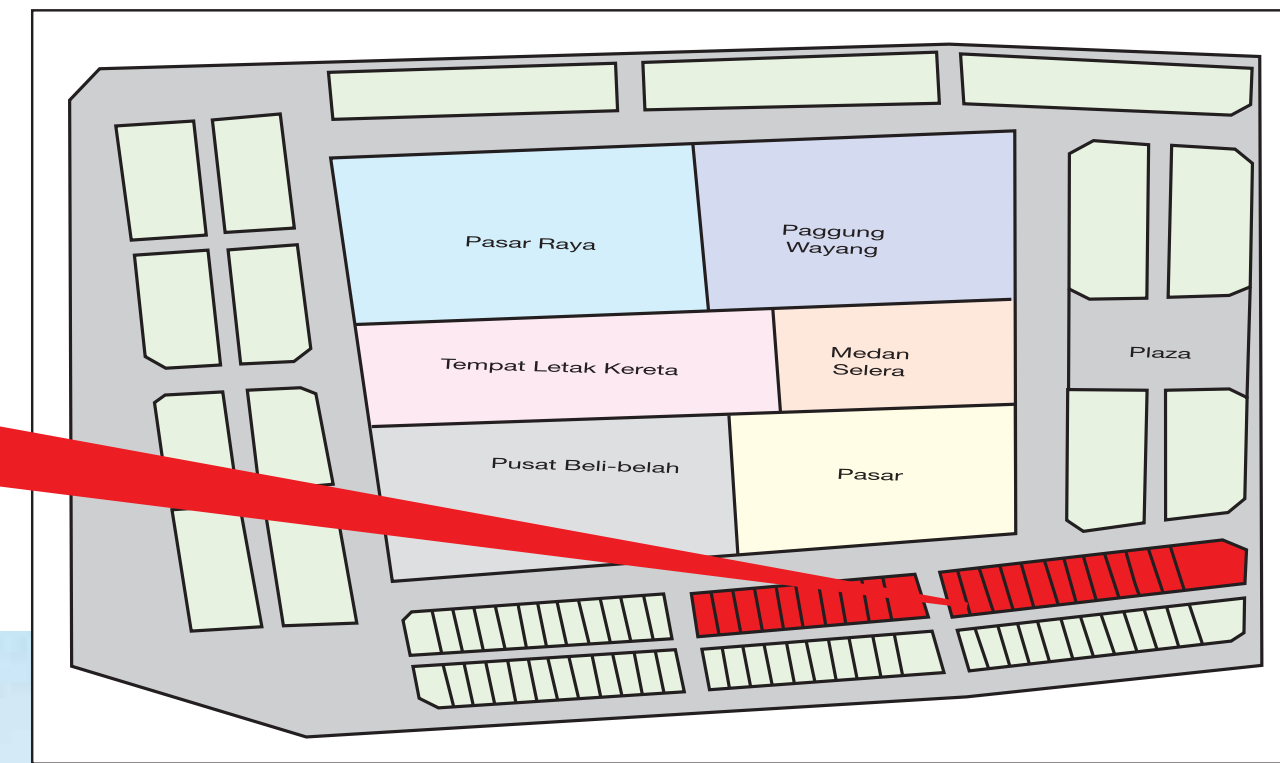
ENDLESS BUSINESS OPPORTUNITIES

SRI MUDA is Shah Alam's fastest population growing location with more than 300,000 near by consumers.

無限商機

全Shah Alam人口成長最快的地點，
 鄰近擁有超過300,000的消費群。

SRI MUDA
 太子園商業中心
COMMERCIAL CENTRE
 Shah Alam



WIRA CHERAS DEVELOPMENT SDN BHD has focused their minds to whole-heartedly present to you a startling new, unique, eye-catching, first class commercial activity.

旺達（蕉賴）發展有限公司聚精會神，隆重推出一項標新，獨創一格，刮目相看，首屈一指的商業活動。



SRI MUDA
 太子園商業中心
COMMERCIAL CENTRE
 Shah Alam